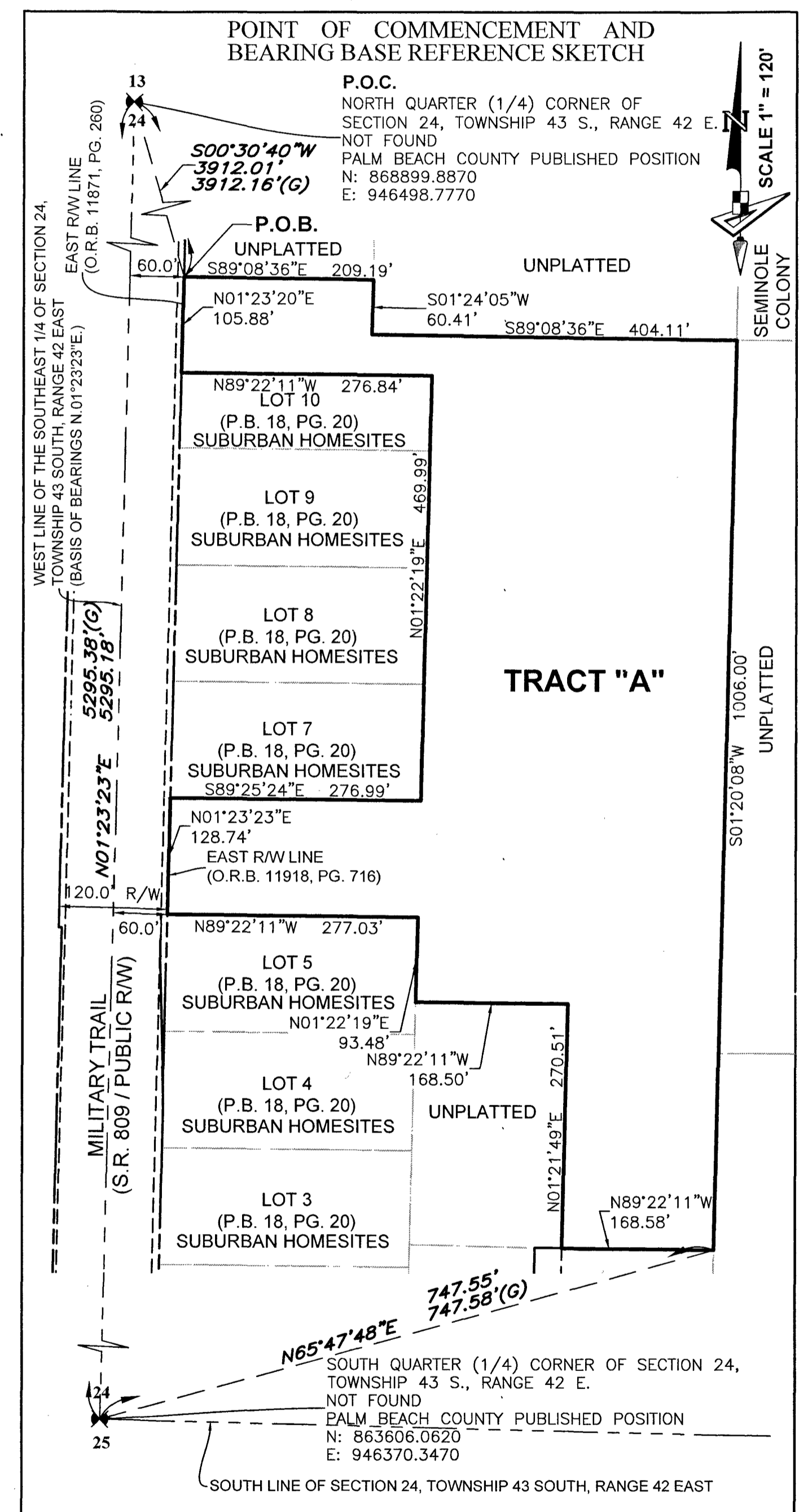
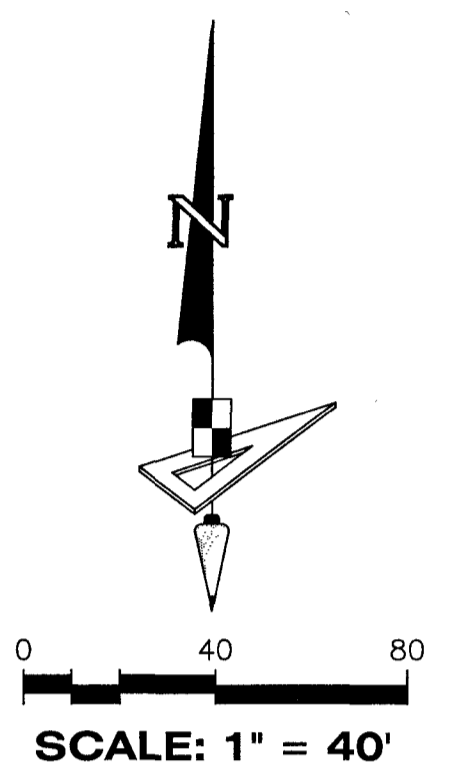
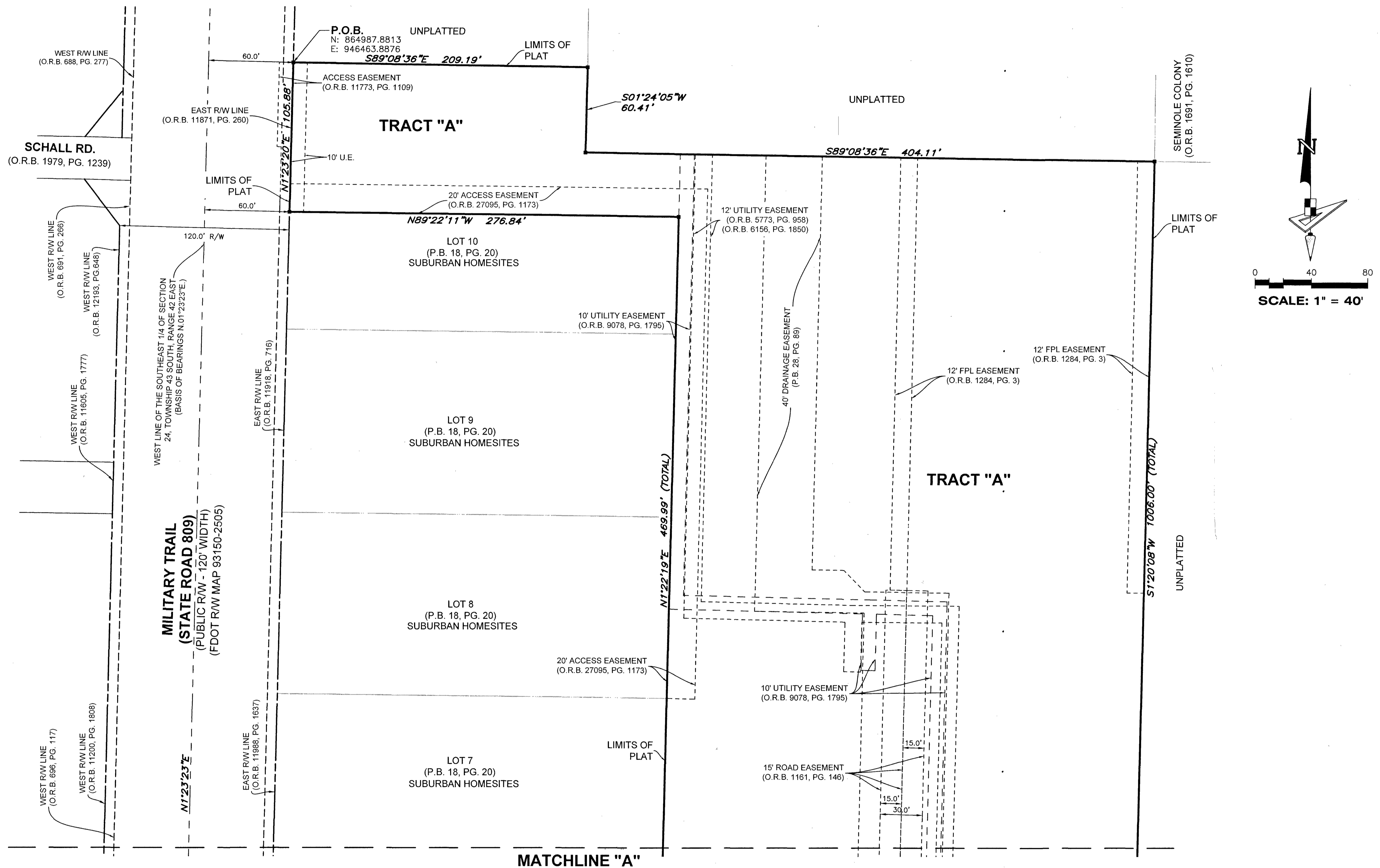


OKEECHOBEE COMMERCE PARK, M.U.P.D.

BEING A REPLAT OF PORTIONS OF LOT 6 AND LOT 10, SUBURBAN HOMESITES, ACCORDING TO THE PLAT THEREOF, AS RECORDED IN PLAT BOOK 18, PAGE 20, OF THE PUBLIC RECORDS OF PALM BEACH COUNTY, FLORIDA, AND A PORTION OF THE PLAT OF ATLANTIC COMMERCIAL PARK, ACCORDING TO THE PLAT THEREOF, AS RECORDED IN PLAT BOOK 28, PAGE 89, OF SAID PUBLIC RECORDS; TOGETHER WITH A PARCEL OF LAND IN THE SOUTHWEST QUARTER (S.W. 1/4) OF THE NORTHWEST QUARTER (N.W. 1/4) OF THE SOUTHEAST QUARTER (S.E. 1/4) OF SECTION 24, TOWNSHIP 43 SOUTH, RANGE 42 EAST, PALM BEACH COUNTY, FLORIDA.



LEGEND

P.B. ---- PLAT BOOK	R/W ---- RIGHT-OF-WAY
PG./PG(s) ---- PAGE/PAGES	@ ---- CENTER LINE OF ROAD
R.P.B. ---- ROAD PLAT BOOK	R ---- RADIUS
O.R./O.R.B. ---- OFFICIAL RECORDS BOOK	L ---- ARC LENGTH
D.B. ---- DEED BOOK	D ---- DELTA ANGLE
P.O.B. ---- POINT OF BEGINNING	L.M.E. ---- LAKE MAINTENANCE EASEMENT
P.O.C. ---- POINT OF COMMENCEMENT	L.W.D.D. ---- LAKE WORTH DRAINAGE DISTRICT
U.E. ---- UTILITY EASEMENT	FDOT ---- FLORIDA DEPARTMENT OF TRANSPORTATION
P.B.C. ---- PALM BEACH COUNTY	FPL ---- FLORIDA POWER & LIGHT CO.
M.U.P.D. ---- MULTI-USE PLANNED DEVELOPMENT	W.M.T. ---- WATER MANAGEMENT TRACT
(D) ---- DEED DISTANCE	■/PRM ---- SET PERMANENT REFERENCE MONUMENT, A 1 1/2" BRASS DISK STAMPED "PRM LB7768" IN A 4"x4" CONCRETE MONUMENT
(G) ---- GRID DISTANCE	● ---- SET IRON ROD WITH CAP "LB7768"
	▲/PRM ---- SET PERMANENT REFERENCE MONUMENT, A NAIL & DISK STAMPED "PRM LB7768"

STATE PLANE COORDINATE NOTES:

- ALL DISTANCES ARE GROUND UNLESS OTHERWISE NOTED
- SCALE FACTOR=1.0000377
- COORDINATE SYSTEM = 1983 STATE PLANE TRANSVERSE MERCATOR PROJECTION, COORDINATES SHOWN ARE GRID COORDINATES
- ZONE = FLORIDA EAST ZONE
- DATUM = NAD 83-1990 ADJUSTMENT
- GROUND DISTANCE X SCALE FACTOR = GRID DISTANCE
- LINEAR UNIT = U.S. SURVEY FEET
- PLAT BEARINGS = GRID BEARINGS, NO ROTATION

THIS INSTRUMENT PREPARED BY
 LUIS J. ORTIZ, P.S.M.
 LS7006 STATE OF FLORIDA
 GEOPPOINT SURVEYING, INC.
 4152 WEST BLUE HERON BOULEVARD, SUITE 106,
 RIVIERA BEACH, FLORIDA 33404.
 CERTIFICATE OF AUTHORIZATION NO. LB7768

GeoPoint
 Surveying, Inc.

4152 W. Blue Heron Blvd. Suite 106
 Riviera Beach, FL 33404
 Phone: (561) 444-2720
 www.geopointsurvey.com
 Licensed Business Number LB 7768

Sheet No. 2 of 3 Sheets